

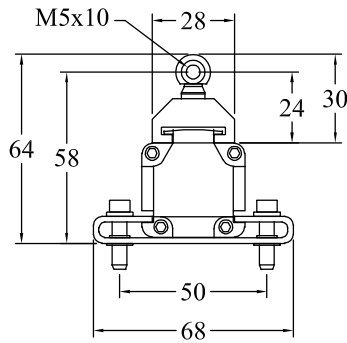
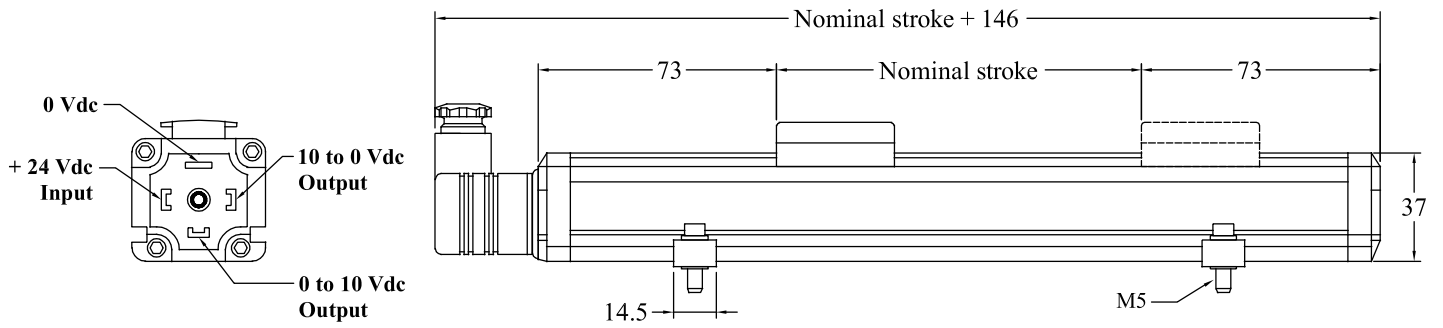
Absopos 1800 Series Non-contact Absolute Position Transducer



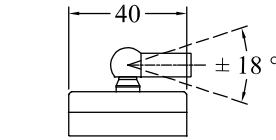
General Specifications

Measurement Type	Linear displacement
Input Voltage	24Vdc nominal (20.4 - 28.8Vdc)
Input Protection	Polarity protection up to -30Vdc, Overvoltage protection up to 36Vdc
Current Consumption	50 - 140mA (stroke range dependent)
Dielectric Strength	500Vdc (DC ground to machine ground)
Output	0 - 10Vdc, minimum load 5K Ω
Resolution	Infinite, restricted by output ripple
Repeatability	< $\pm 0.005\%$ of full scale
Non-Linearity	< $\pm 0.01\%$ of full scale (minimum $\pm 90\mu\text{m}$)
Update Time	0.5 ms up to 1200 mm / 1.0 ms up to 2400 mm 2.0 ms up to 4800 mm / 5.0 ms up to 7600 mm stroke length
Operation Temperature	-20 to +75°C (-20 to +167°F)
Sealing	IP 65
Vibration Rating	10-20000 Hz per IEC standard 68-2-6
Shock Rating	50g single hit per IEC standard 68-2-27

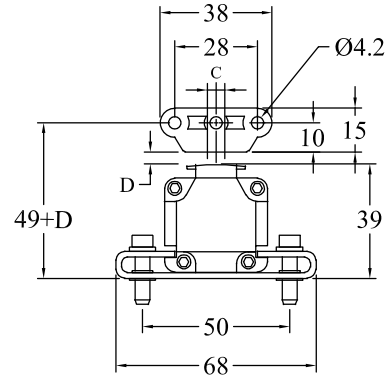




Captive Magnet
Order No: 1800 900 001



* Point arrow on magnet toward connector for installation.



Lateral offset:
C = ±8 mm
Vertical distance of magnet:
D = 0.1 to 5 mm

Floating Magnet
Order No: 1800 900 002



Ordering Code

1800 1 X X X X X

Magnet Type

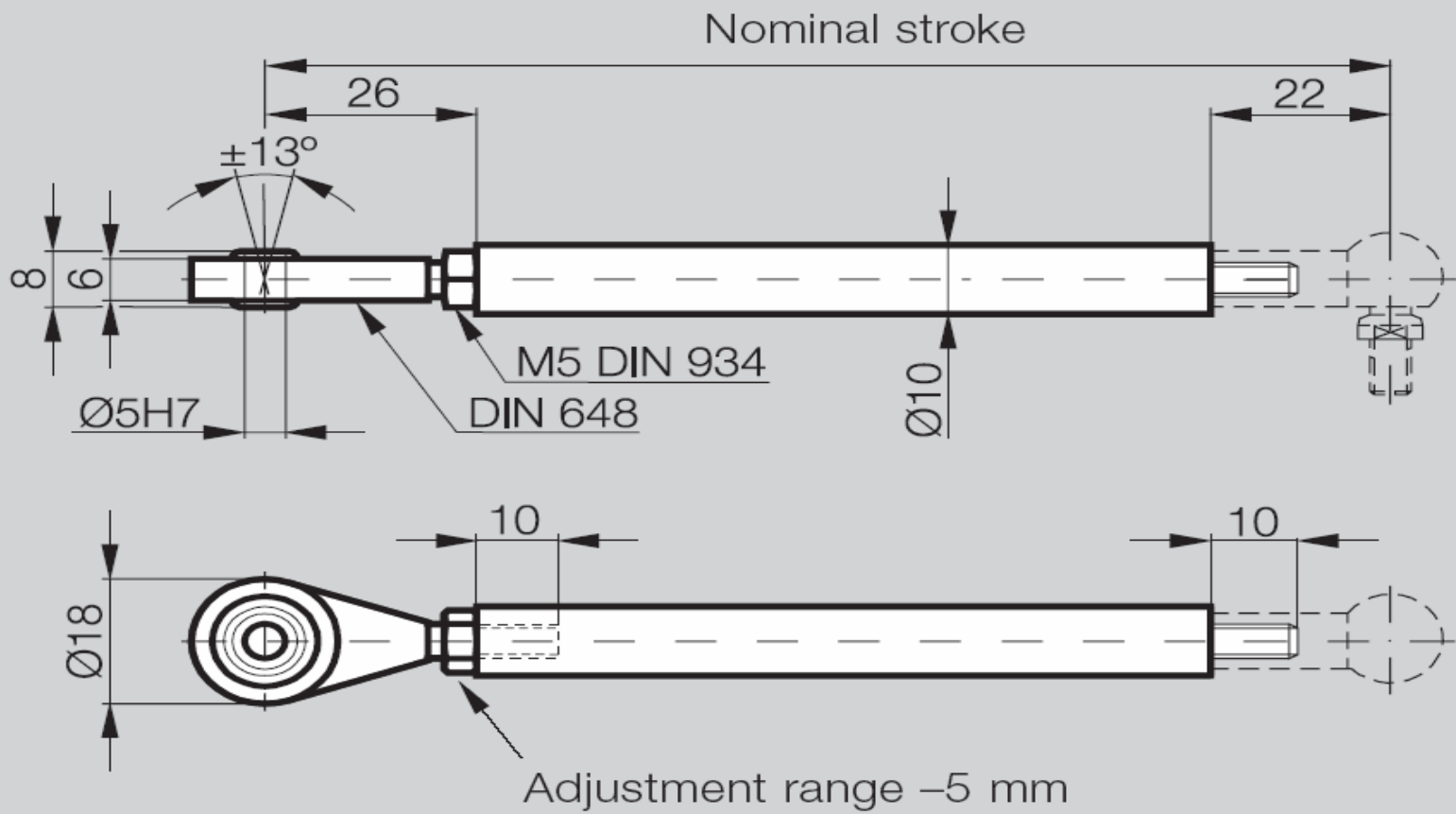
- 1 = Captive
- 2 = Floating

Stroke Length

0100 = 100 mm	0425 = 425 mm	0950 = 950 mm
0130 = 130 mm	0450 = 450 mm	1000 = 1000 mm
0150 = 150 mm	0500 = 500 mm	1100 = 1100 mm
0175 = 175 mm	0525 = 525 mm	1250 = 1250 mm
0200 = 200 mm	0600 = 600 mm	1350 = 1350 mm
0225 = 225 mm	0650 = 650 mm	1500 = 1500 mm
0275 = 275 mm	0750 = 750 mm	1600 = 1600 mm
0300 = 300 mm	0800 = 800 mm	1750 = 1750 mm
0360 = 360 mm	0875 = 875 mm	2000 = 2000 mm
0400 = 400 mm	0900 = 900 mm	*other length upon request.

www.germanjet.de





Ordering example: Control arm

1800-A-X X X X : Standard nominal strokes (mm) : 0075, 0100, 0125, 0150, 0200, 0250, 0350
 0400, 0450, 0500, 0600, 0800, 1000, 2000



800 Series Non-contact Absolute Position Transducer